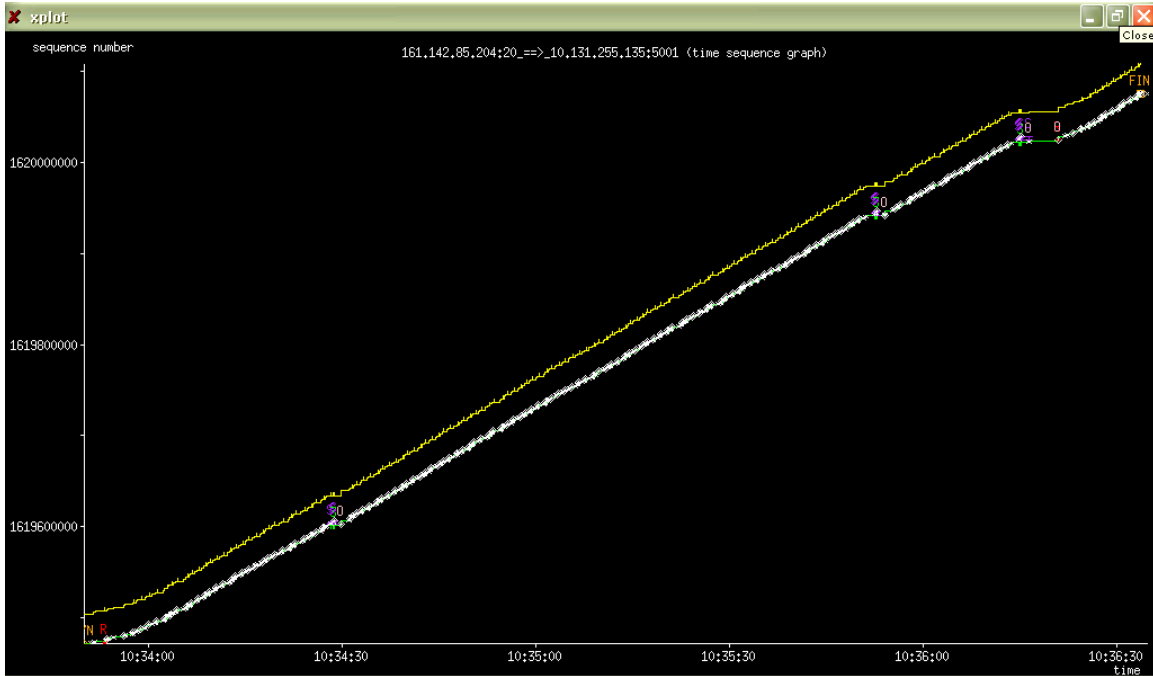


TCPTRACE OUTPUT

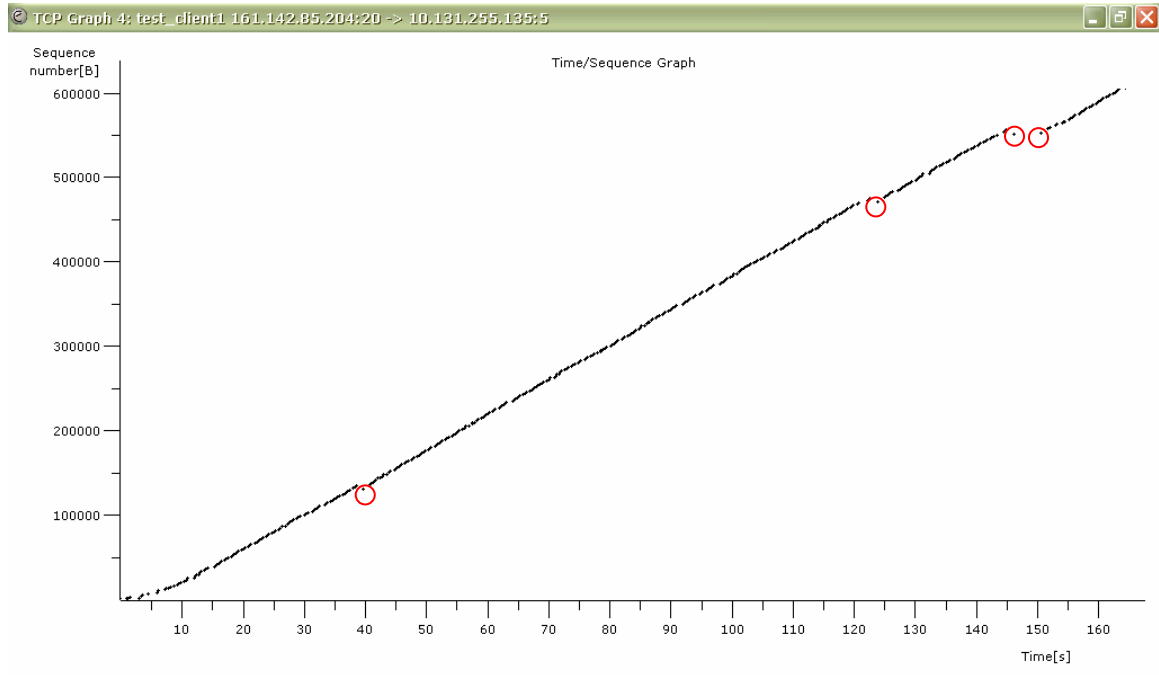
rexmt data pkts: 2 (R) (approx. at 10:33:53 and 10:36:20)
outoforder pkts: 4 (O) (approx. at 10:34:30, 10:35:54, 10:36:16, 10:36:20)



ETHERREAL 0.10.11 OUTPUT

rexmt data pkts: **4 (red circle)** (at approx. 10:34:29, 10:35:54, 10:36:16 and 10:36:20)

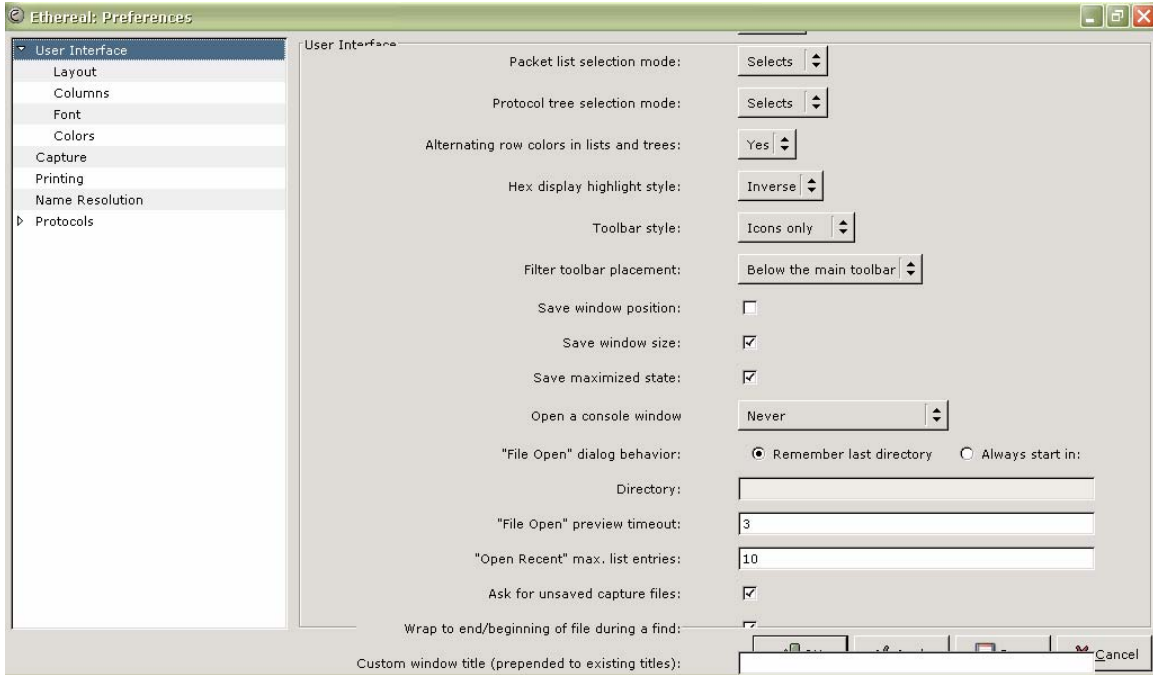
outoforder pkts: **1** (at approx. 10:33:53)



Comparison:

For pkts reported as outoforder pkt by tcptrace, ethereal reported them as rexmt pkts and vice versa. Plus there is one rexmt pkt reported by tcptrace that is not reported by ethereal.

Please improve the GUI for small screen....



This is what I get on my 10" monitor (screen resolution 1024 x 600 p)